



MONTHLY MEMBERSHIP PROGRESS REPORT

District 321C1

Results as of: 4/30/2016

GMT: V S Kukreja

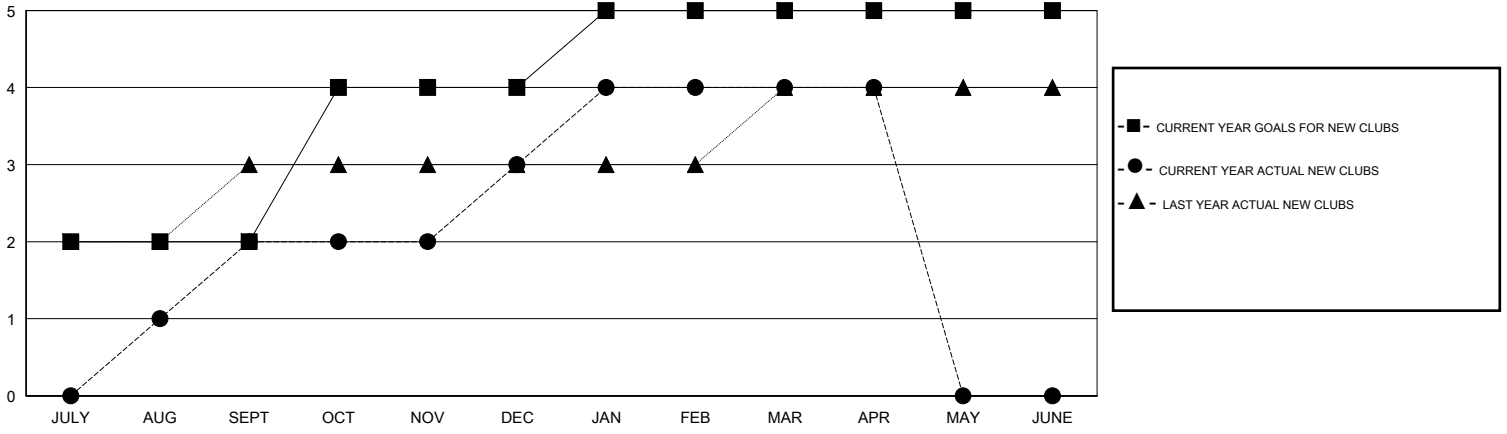
LOCATION INDIA

GMT CA 6

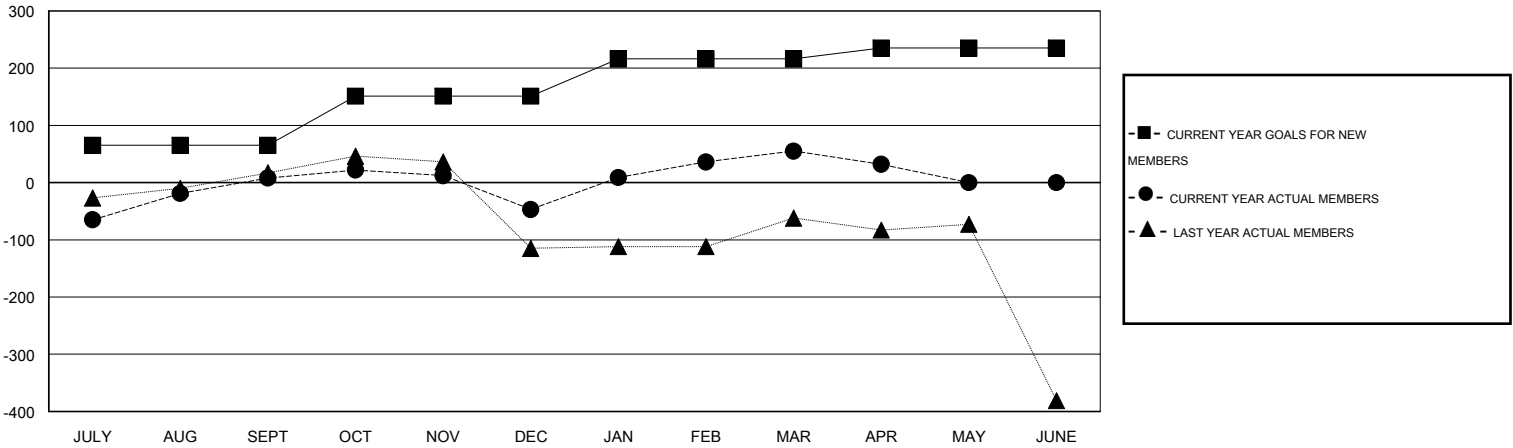
Clubs				
RESULTS FOR 2015-2016				
QUARTER	NEW CLUB GOAL	NEW CLUBS	DROPPED CLUBS	NET GAIN/LOSS
JULY/AUG/SEPT	2	2	0	2
OCT/NOV/DEC	2	1	2	-1
JAN/FEB/MAR	1	1	0	1
APR/MAY/JUNE	0	0	0	0

Members				
RESULTS FOR 2015-2016				
QUARTER	NEW MEMBER GOAL	CHARTER AND NEW MEMBERS ADDED	DROPPED MEMBERS	NET GAIN/LOSS
JULY/AUG/SEPT	65	154	146	8
OCT/NOV/DEC	86	78	133	-55
JAN/FEB/MAR	65	168	66	102
APR/MAY/JUNE	19	27	50	-23

GOALS AND ACTUAL NEW CLUBS CUMULATIVE



GOALS AND ACTUAL MEMBERS CUMULATIVE



DROPPED CLUBS: 2

66 CLUBS OF 135 ADDED 1 OR MORE NEW MEMBERS

GENDER DISTRIBUTION	
MALE	3,149 (81.06%)
FEMALE	736 (18.94%)

DROPPED MEMBERS	
DECEASED	11
CLUB CANCELLED	63
OTHER	321
TOTAL	395

[CLICK HERE FOR HEALTH ASSESSMENT DATA](#)

FAMILY UNIT MEMBERS	1,225
HEAD OF HOUSEHOLD	571
NON-HEAD OF HOUSEHOLD	654